

Innovation Partnerships for Rural Development

The Regional Context

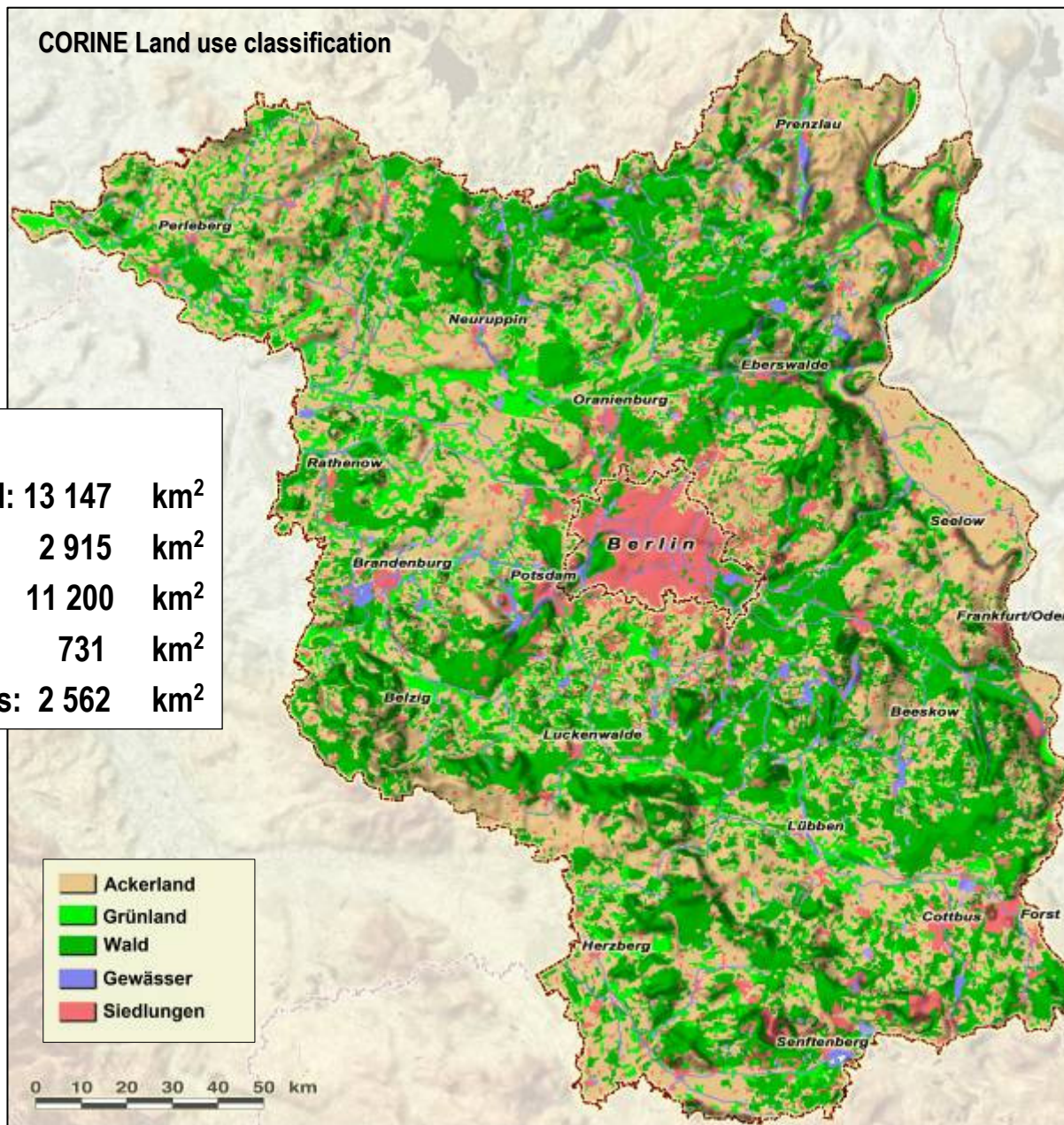
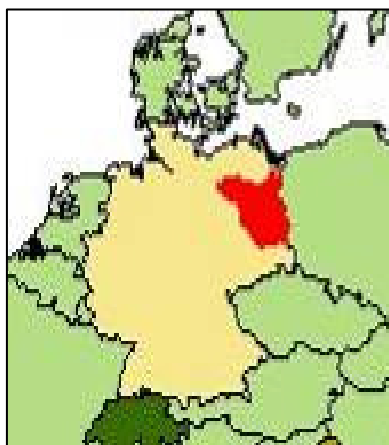
Brandenburg's Strategy for Sustainability in Rural Areas

Hubert Wiggering/ZALF & Reiner Brunsch/ATB

CORINE Land use classification

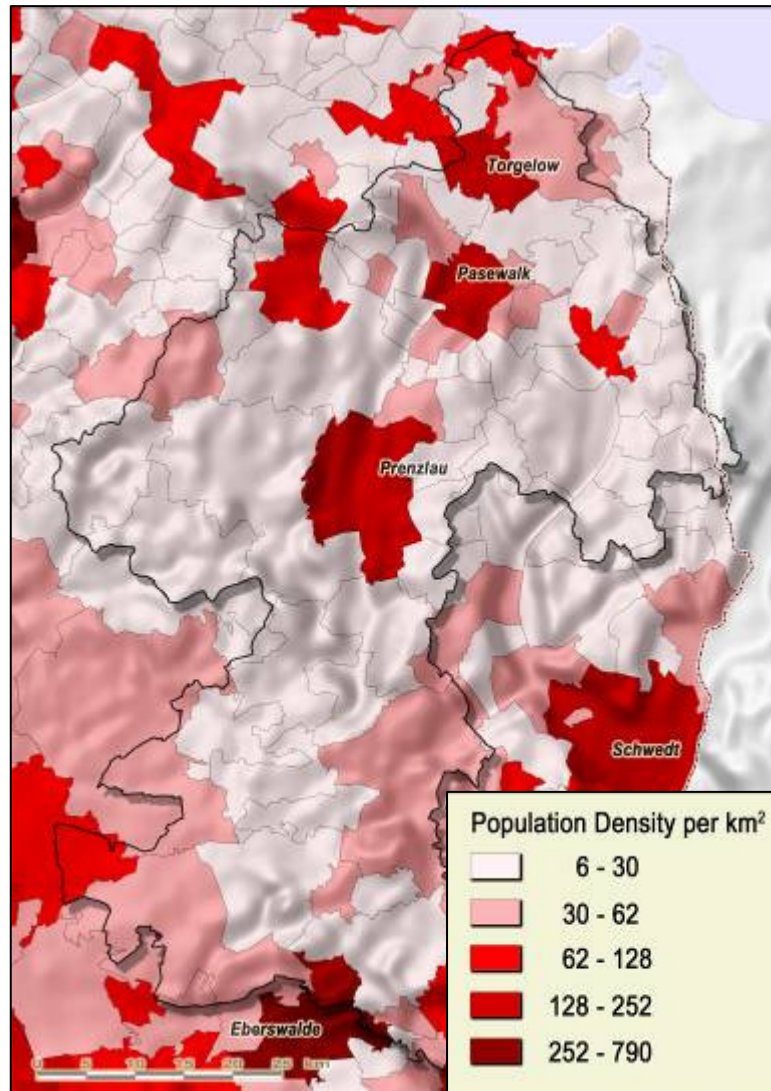
Land use

● Arable land:	13 147	km ²
● Grassland:	2 915	km ²
● Forest:	11 200	km ²
● Waters:	731	km ²
● Settlements:	2 562	km ²



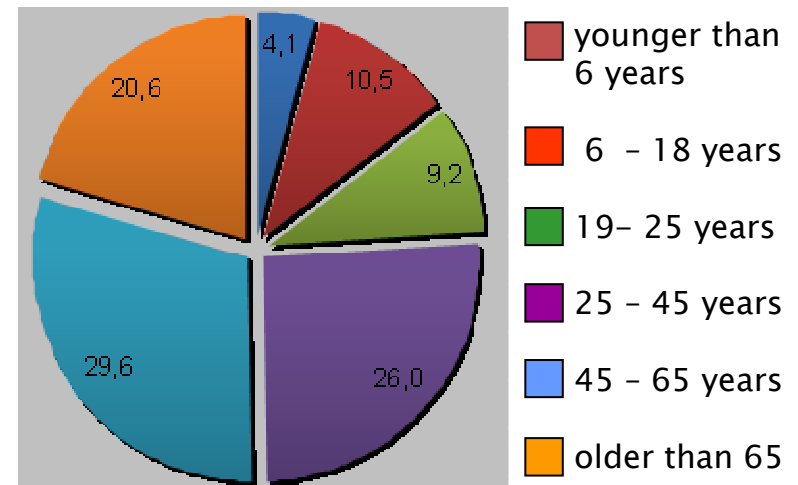
Regional Structural Analysis

Population density: example Uckermark/Brandenburg/Germany



- population concentrated in few centers
- lowest population density in Germany

Age structure in Uckermark County



Brandenburg's Strategy for Sustainability in Rural Areas

..... and where to start?

- ✓ Smart growth – developing an economy based on knowledge and innovation
 - ✓ Innovation union
 - ✓ Youth on the move
 - ✓ A digital agenda for Europe
- ✓ Sustainable growth – promoting a more resource efficient, greener and more competitive economy
 - ✓ Resource efficient Europe
 - ✓ An industrial policy for the globalisation era
- ✓ Inclusive growth – a high employment economy delivering economic, social and territorial cohesion
 - ✓ An agenda for new skills and jobs
 - ✓ European platform against poverty

The CAP towards 2020 (proposal published Oct 12, 2011)

Challenges and Objectives:

Economic:

Food security
Price Variability
Economic Crisis

Environment:

GHG emissions, climate change
Soil degradation
Water/Air quality
Habitats and Biodiversity

Territory:

Vitality of Rural Areas
Diversity of European Agriculture

European Commission, DG Agriculture and Rural Development, 10/2011

CAP_2013slide-show_en.pdf - Adobe Reader

Datei Bearbeiten Anzeigen Dokument Werkzeuge Fenster Hilfe

4 / 25 92% Suchen

How will the CAP be financed?

- Commission proposals on Multi-Annual Financial Framework for 2014-2020 to maintain CAP spending at 2013 levels in nominal terms

in billion EUR	Current prices
- Pillar I - Direct payments and market-related expenditure	317.2
- Pillar II - Rural development	101.2
Total Pillar I and II	418.4
- Food safety	2.5
- Most deprived persons	2.8
- Reserve for crises in the agricultural sector	3.9
- European Globalisation Fund	Up to 2.8
- Research and innovation on food security, the bio-economy and sustainable agriculture	5.1
Total additional amounts	Up to 17.1
Total proposed amounts for the period 2014-2020	Up to 435.5

Source: Commission Communication 'A budget for Europe 2020' – COM(2011) 500 final, part II.

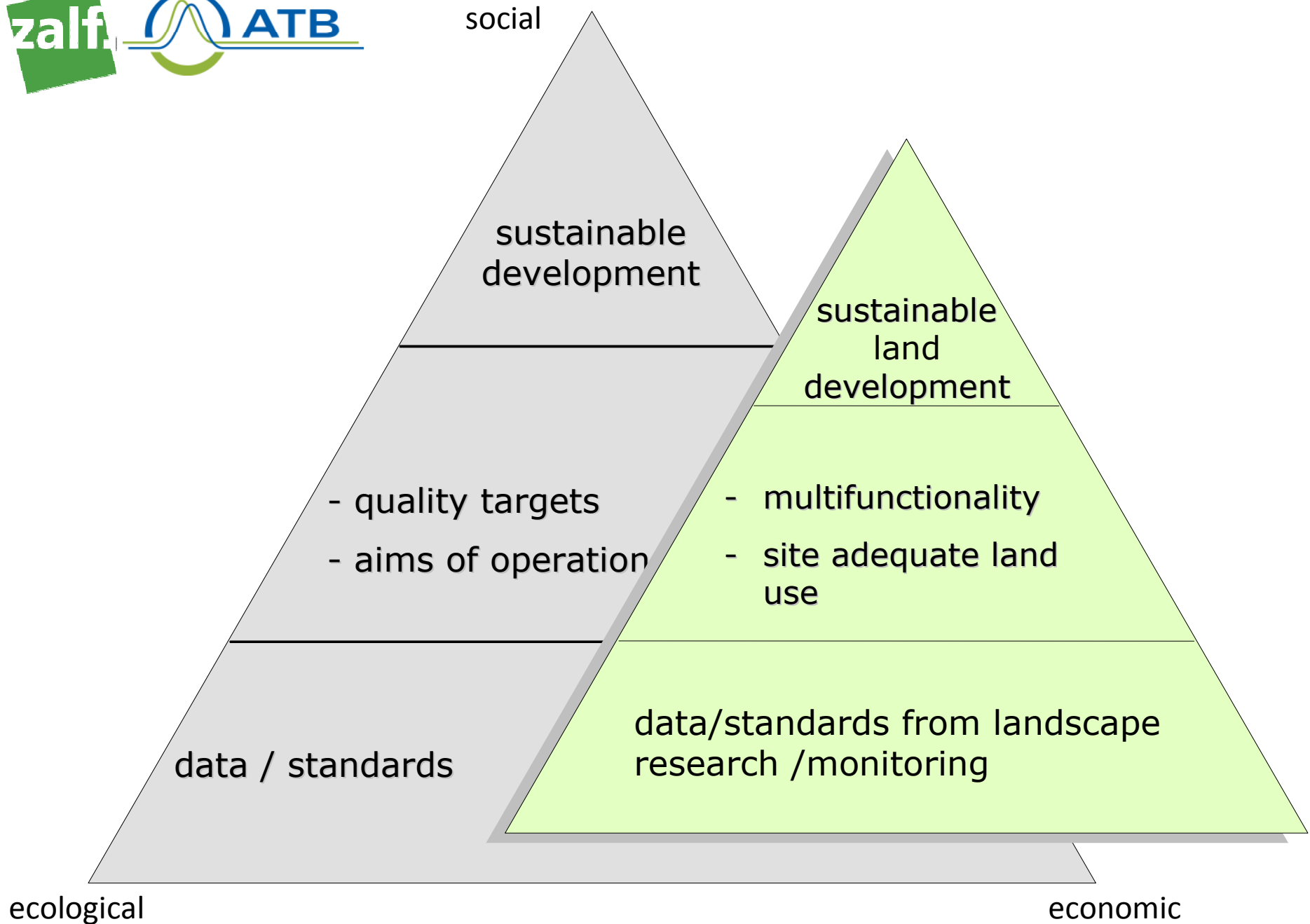
European Commission
Agriculture and Rural Development



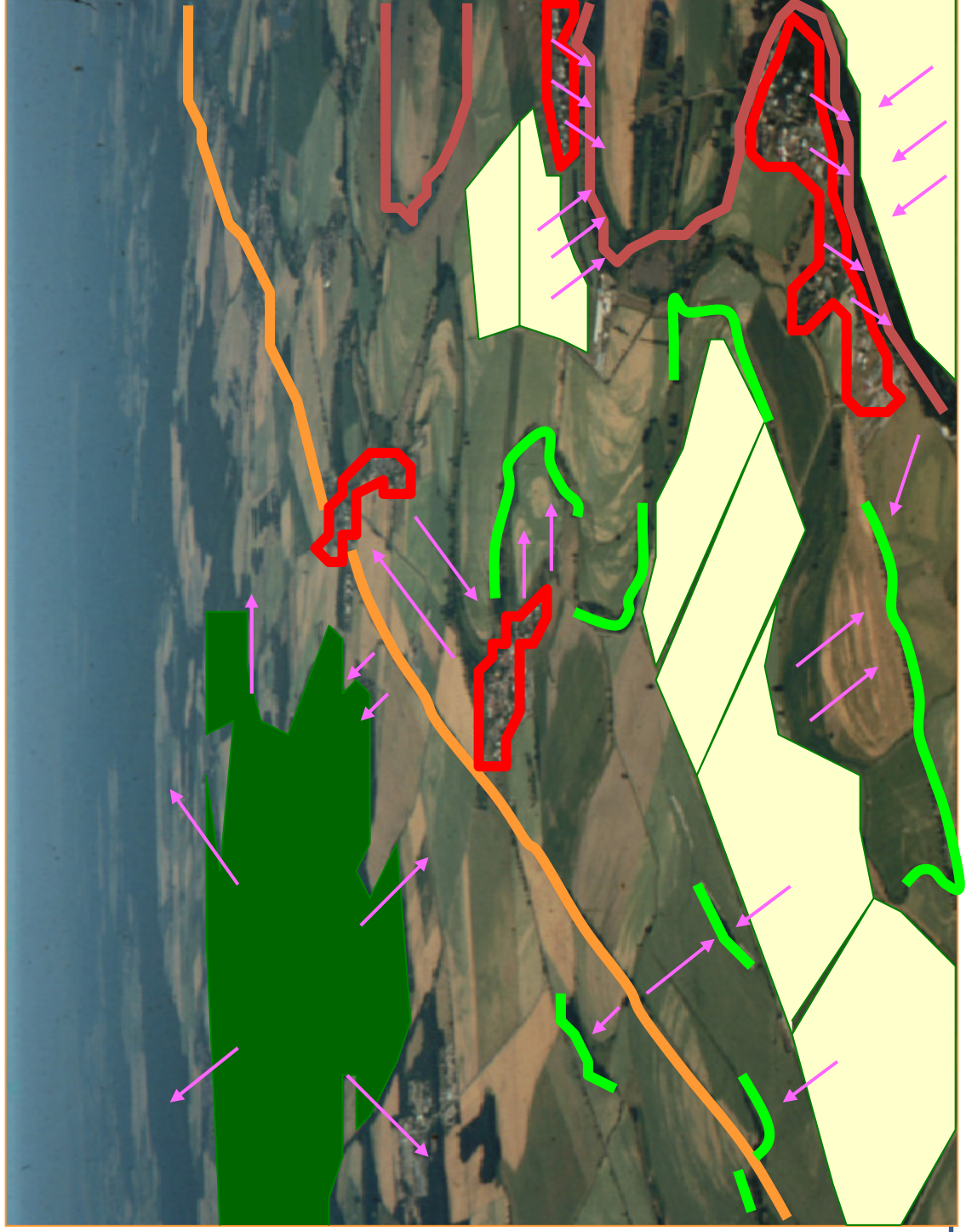
Leibniz Centre for Agricultural Landscape Research

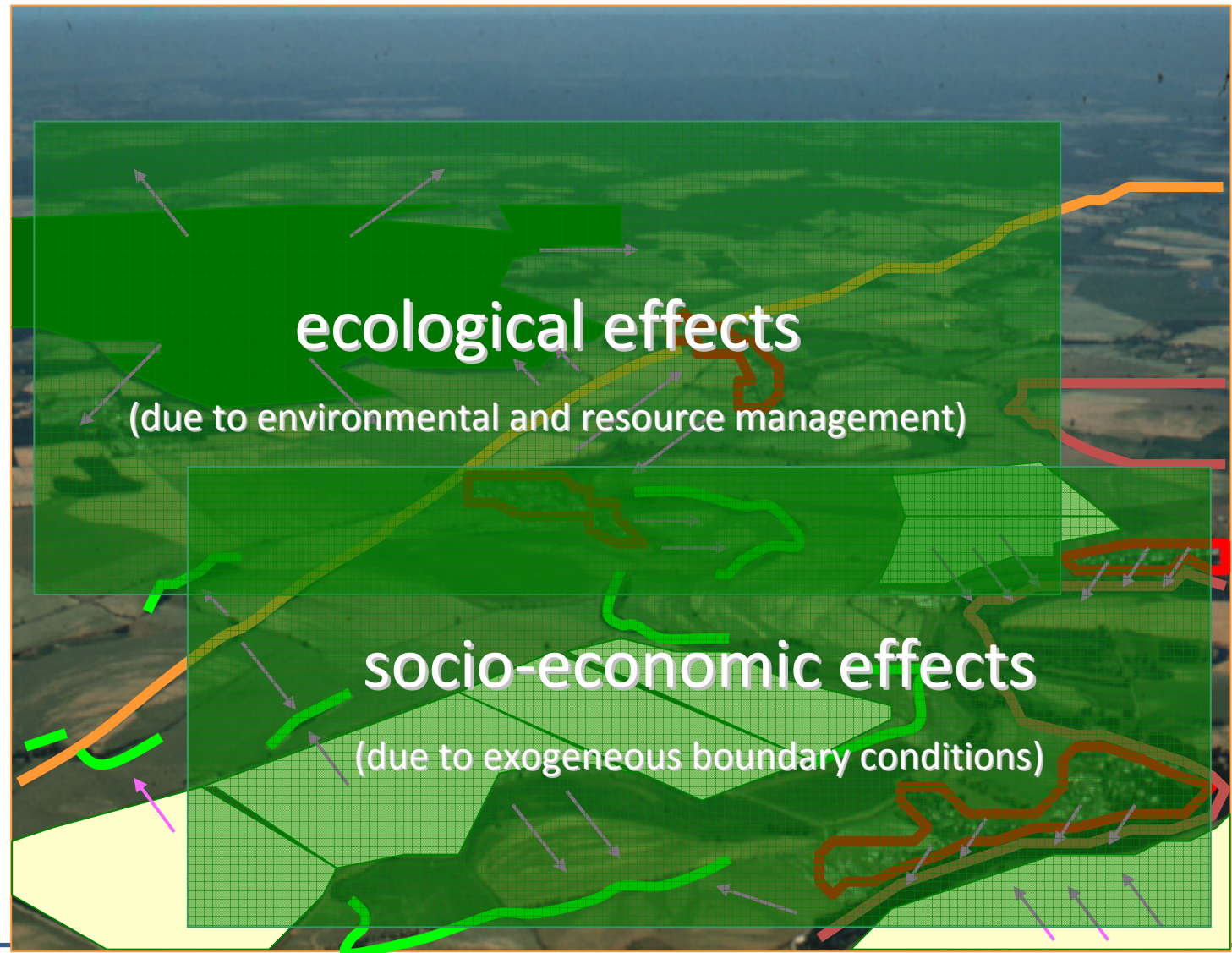
Brandenburg's Strategy for Sustainability in Rural Areas

Brussels, June 2012











Leibniz Centre for Agricultural Landscape Research

Brandenburg's Strategy for Sustainability in Rural Areas

Brussels, June 2012

The Council for Sustainable Development of the State of Brandenburg

Recommendations supporting the discussion about the corner points for a Brandenburg Sustainability Strategy

Challenges and opportunities from our perspective:

- Services for the public
- Partnership Brandenburg - Berlin
- Leadership in climate change politics
- Communication, education and research
- Sustainability and governance



Gemeinsame Landesplanung Berlin Brandenburg <http://gl.berlin-brandenburg.de/regionalplanung/regionen/index.html>

Quality of life in sustainable cities and villages

Economy and work in the metropolitan area

Pioneer role in energy and climate change

Communication and education strategy for sustainable development

Sustainable financial policy

Priorities for activities



Governance

- Installing governmental structures for sustainable development
- Developing communication strategies
- Establishing management structures for monitoring
- Linking strategies of federal and state level
- Developing an institutional archetype
- Linking top-down and bottom-up approaches
- Developing pilot studies

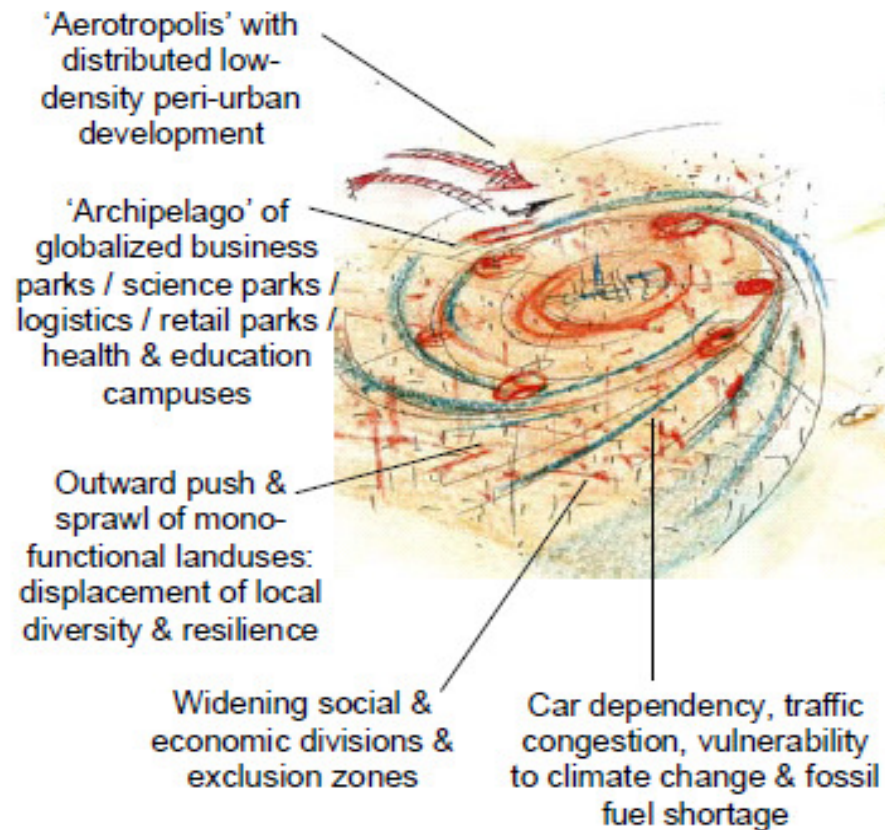
... and the target?

- ┐ a **land use conception** for
Berlin/Brandenburg
(instead of singular strategies and measures)

CITY-REGION: TYPE (A)

Globalized development dynamic,
with sub-optimal city-region
governance & planning:

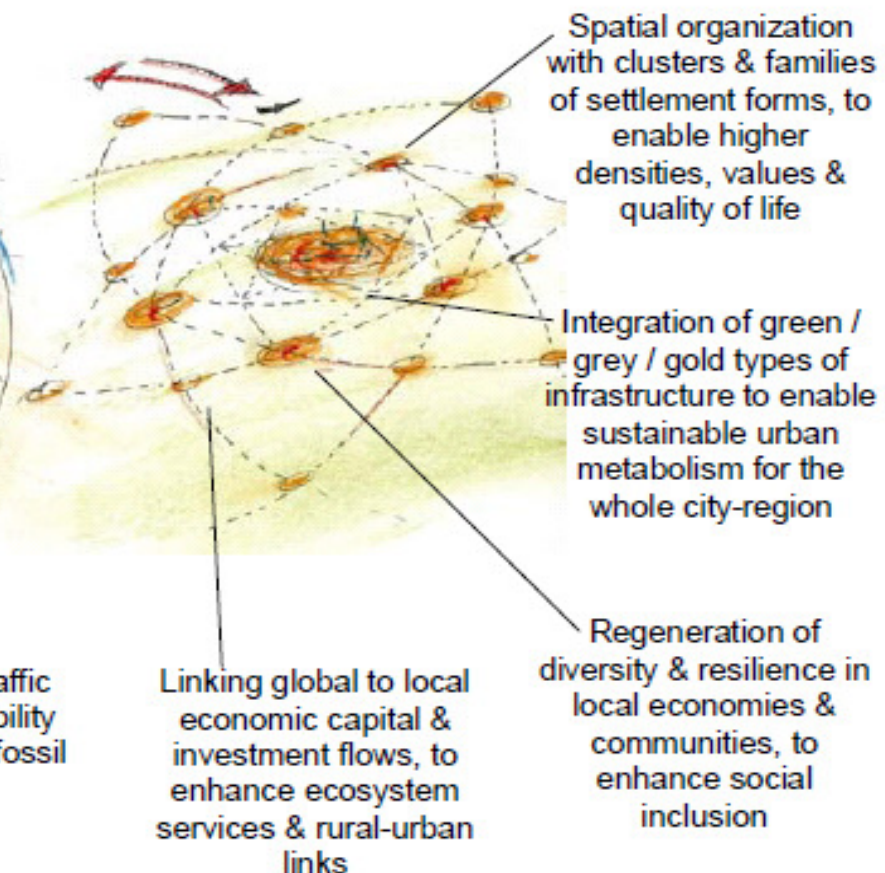
Result – 'urban sprawl'



CITY-REGION: TYPE (B)

Balanced development dynamic with
strategic city-region governance &
planning:

Result – 'social city-region'



Recently discussed (research) themes

- Increasing productivity, resource efficiency, and sustainable resource management
- Ecosystem services and soil functionality (productive capacity, carbon sequestration, water retention, biodiversity)
- Innovative technology innovation in support of the bio-based economy
- Sustainability of supply chain through innovation in products and services
- Food quality, food safety, and healthy lifestyles (consumer information and consumer choice)

An aerial photograph of a rural landscape. The foreground shows a mix of green and brown fields, with some irregular shapes that could be ponds or small forests. A winding road or path cuts through the middle ground, lined with a dense row of trees. The background is a vast, flat expanse of land under a clear blue sky.

..... thank you for your attention
!